

## Why MobileStar?



### **Dealers – Monitor machines to ensure correct operation**

- Reduce Service costs by troubleshooting the machine from the shop first
- When a field service call arrives, have the knowledge ahead of time so that you bring the right tools/parts to the machine
- Monitor leased equipment for billing and correct operation



### **Foreman/ Site Manager – Use MobileStar to coordinate machinery needs and increase utilization**

- Track uptime and fuel consumption for a more efficient work flow
- Use the tracking feature to know where your machinery is at all times
- Increase performance by coordinating machinery to work together.



### **Engineers – Use MobileStar to verify machine settings**

- Field test components from the office receiving real-time (twice a second) readings
- Utilize complete monitoring to ensure design requirements meet SOP's
- Reduce warranty claims by using the live machine data to compliment design features and changes.

MobileStar is not just components, it's your ideas... put to work!



For more information  
email: [sales@mobilestar.us](mailto:sales@mobilestar.us)

**888.417.1392**

To view our promotional video go to:

**[www.mobilestar.us](http://www.mobilestar.us)**



**[www.mobilestar.us](http://www.mobilestar.us)**

# Harness the Power of Remote Communication

## A new level of Interaction!



- Telematics
- Diagnostics
- Security
- Monitoring
- Location
- Control

**[www.mobilestar.us](http://www.mobilestar.us)**

# The MobileStar Solution



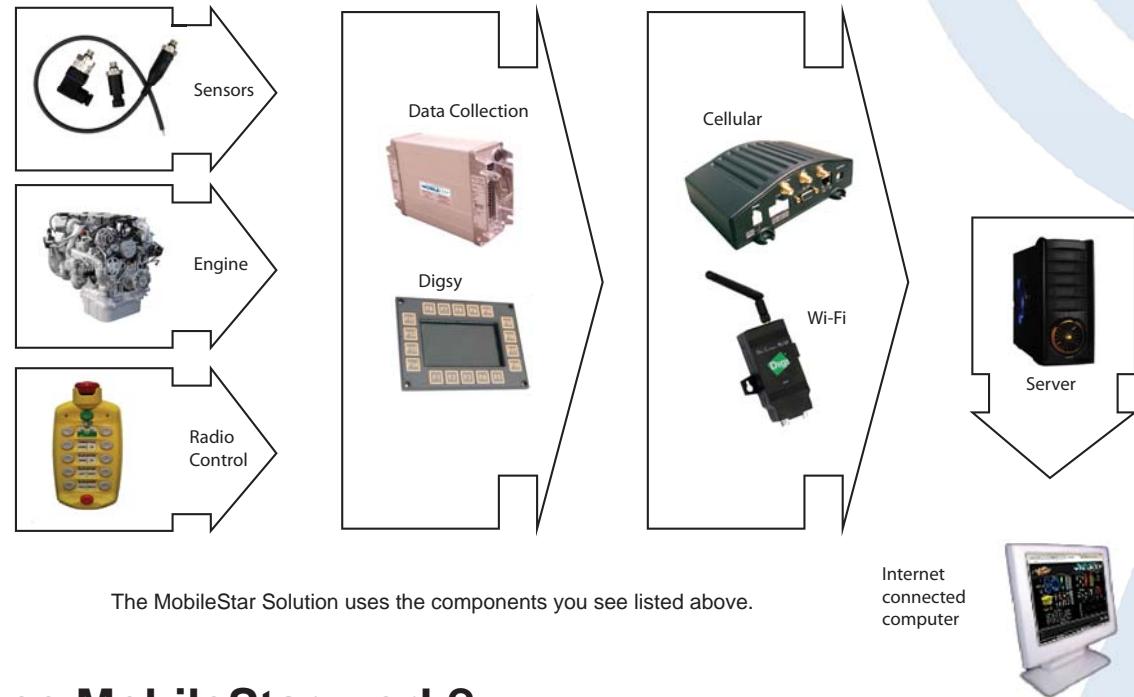
## What is MobileStar?

In 2009, Dakota Fluid Power's customers in the heavy construction industry identified a need to control the costs associated with monitoring heavy equipment and the required manpower to do so.

Dakota Fluid Power was asked if a solution was possible. Our team went to work to create a solution to the customer's needs. The outcome was... MobileStar.

MobileStar is an equipment monitoring system that allows any computer with an internet connection the ability to access any machine that is equipped with a compatible MobileStar system.

Today, MobileStar provides a remote, web-based, diagnostic and monitoring tool with additional functionality that can be configured to allow varying degrees of equipment control.



The MobileStar Solution uses the components you see listed above.

## How does MobileStar work?

Through a series of sensors, the data is collected in the data collection components. The data is then transferred via cellular or Wi-Fi to a server (computer) and displayed on the monitor of the individual needing to monitor the machinery.

Examples of systems that can be monitored include:

- Pressure Transducers - LVDT Position sensors - Inclinometers - Pressure Switches - Level Switches
- Temp Switches Level Sensors - Tach/Speed Sensors - Current Sensors

**MobileStar** features ultimate, two-way communication. The end-user can simply dial in each machine to locate, troubleshoot, secure, turn on or off, or create "ultimate performance" capabilities of each machine. Or, if the end user wishes they can simply deploy custom dispatching for logistical cost saving solutions. Any vehicle, anywhere in the world can be remotely accessed from a central point in another part of the world! All that is needed is a computer with an internet connection and a machine equipped with a compatible **MobileStar** control system. If you can access the internet...from anywhere...you will know what your machinery is doing; wherever it may be in the world!

[www.mobilestar.us](http://www.mobilestar.us)

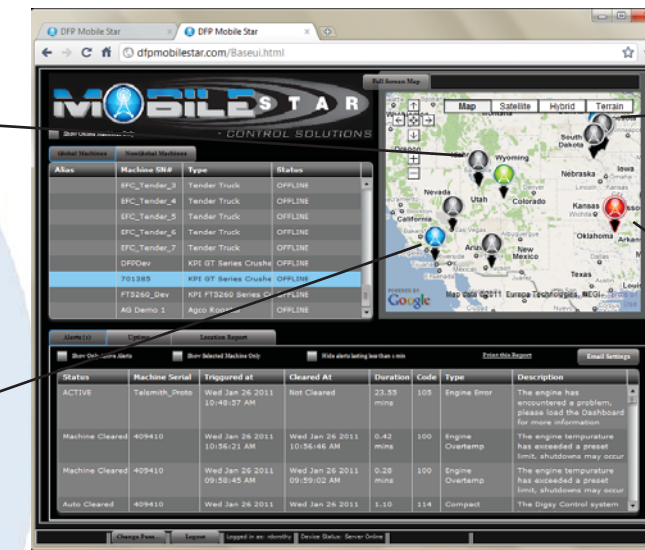
Machine 1 - Utah



Machine 2 - California



MobileStar Global Overview



Machine 3 - Minnesota

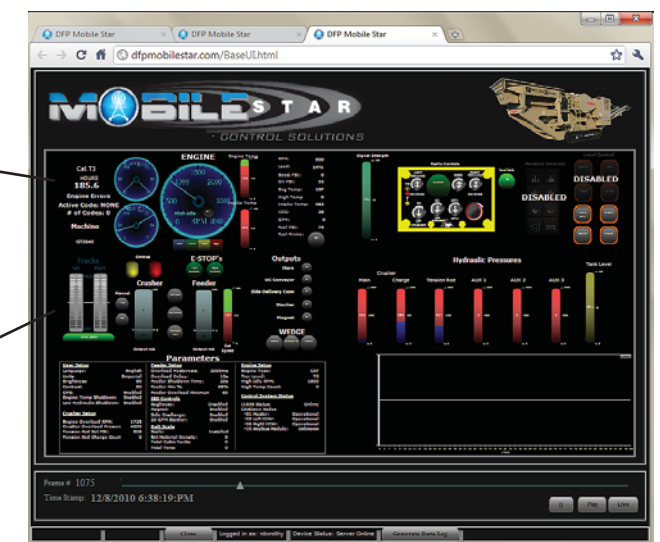


Machine 4 - Oklahoma



Display all your equipment with machine specific data: engine data, pressures, temperatures, switch states and machine parameters. See how each one of your machines' are operating, no matter where in the world they are.

MobileStar Dashboard



Engine Diagnostics



Load Diagnostics



Monitor all equipment functions through the interactive custom designed dashboard

## Track and Monitor

- Location of equipment
- Engine information
- Hydraulic pressures
- Switch status
- Electrical connections to pumps and valves
- GPS positioning
- Security
- Log equipment activity and events for later retrieval and evaluation



Generate custom reports for: Alerts, Uptime and Location



[www.mobilestar.us](http://www.mobilestar.us)